



2021-2022
COVID-19
**Programs
Overview**

www.swrsd.org
907-842-5287



Published February 2, 2022

Southwest Region Schools

www.swrsd.org

907-842-5287

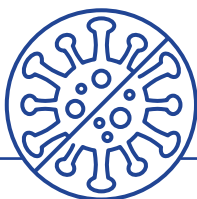


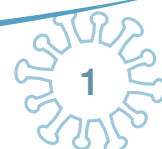
Table of Contents

Standard Operations Plan.....	3
School Schedule.....	3
Meeting the Needs of Students with Exceptional Needs	3
Health and Safety Protocols.....	4
- <i>Masking</i>	
- <i>Social Distancing</i>	
- <i>Personal Hygiene</i>	
- <i>General</i>	
Transportation.....	5
Facilities Use & Disinfecting/Cleaning.....	5
Student Activities and District Travel.....	6
Food Service.....	6
Symptom Free Facilities.....	7
- <i>Definitions</i>	
- <i>Symptom Isolation</i>	
Vaccinations.....	8
Screening Protocol.....	8
Symptomatic Response Protocol.....	8
Response Protocol.....	9
Positive Case Response Matrix.....	9

Using this manual:

Determining and Moving Between Levels

The district health advisory team will inform decisions about moving to the Positive Case Response Protocol. The goal of the protocols will be to maintain the most normal and consistent in-person school environment possible with consideration to safety.



Message from Our Superintendent

In early March of 2020, we were challenged with a pandemic of a magnitude not seen in our lifetimes. Since that March, the coronavirus, known more properly as COVID-19, has heavily impacted our nation, region, and communities. The past year and a half has been very difficult for all concerned, but it has been heartening to see the cooperation and sense of community that has gotten us through this troubled time.

From sources at the national, state and regional level, we are told that we are beginning to come out of the most serious phase of the pandemic. While we acknowledge that the pandemic is not over and there are remaining concerns about new variants of the virus and spread in other places, we believe that we can safely resume more standard operation of our school buildings and educational programs.

Above all else we believe that our young people deserve the critical opportunity to grow and prepare for their futures.

As a district, we continue to monitor the situation closely and have been actively planning to safely reopen our schools in the most normal manner possible. In order to help protect our students, staff and communities, we continue to work with regional and state health professionals to ensure that we are promoting health and safety which will allow us to stay open and avoid future closures.

The updated protocols in this document are designed to allow us to resume standard operations safely this fall. We know that we can find a path forward through all of this. It is what we do as schools and communities. We are focused on instruction knowing that if we keep safety in mind at all times, we can have a productive school year.

Our focus ahead will be on Standard Operations, resorting to enhanced measures only when necessary and in as limited a fashion as is consistent with the health and safety of our students, staff, and communities. As we did this past school year, we will continue to work with our local CSCs, tribes and cities to chart the path ahead.

Thanks to all of you (parents, community members, and staff) for your care for our young people and for the patience to work with us to prepare for the school year ahead. Together, we will provide a positive and productive year for our youth.



Steve Noonkesser

Steve Noonkesser
SWRS Superintendent

Standard Operations Plan

This school year we will be operating under a Standard Operations Plan. Our focus will be on maintaining as normal a school year as possible, resorting to enhanced measures only when necessary and in as limited a fashion as is consistent with the health and safety of our students, staff, and communities. As we did this past school year, we will continue to work with our local CSCs, tribes and cities to chart the path ahead.

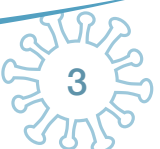
If cases arise in our communities, we will address the situation one community at time, assessing risk and responding in a measured fashion.

School Schedule

- All students will attend a full day of on-site instruction.
- School will operate at 100% capacity.
- School will begin at 9:00am across the district without staggered start times.

Meeting the Needs of Students with Exceptional Needs

- Students will attend and receive all planned services.
- All planned services, evaluations, and assessments will be on-site with precautionary measures to include: symptom checks, masks, plexiglass dividers, and disinfectant of areas and supplies
- Itinerant-related providers will deliver in-person and online services

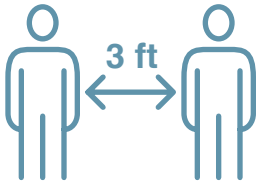


Health and Safety Protocol



Masks

- Standard Operations
 - › Students and staff will be required to wear masks within the building.
 - › Current CDC requirements regarding mask use on buses will be followed (see Transportation below).
-



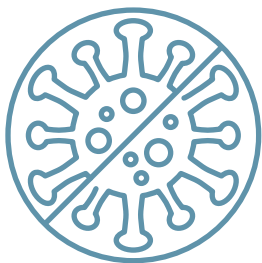
Social Distancing

- Schools will plan to implement social distancing in all areas in the school building, especially focusing on common areas of the school and anywhere lines may form.
 - School starts, recess, lunch, transitions, and school releases will be staggered to ensure social distancing can be maintained.
 - Grade level groups or smaller cohorts of students will stay together as much as possible throughout the day and day to day.
-



Personal Hygiene

- Staff will teach and reinforce thorough hand washing with soap and water for at least 20 seconds and/or the safe use of hand sanitizer that contains at least 60% alcohol by staff and older students.
 - Hand washing is required during key times including but not limited to: arrival and dismissal; before, during, and after preparing or eating food; after using the bathroom; after blowing one's nose, coughing, or sneezing; after touching objects with bare hands that have been handled by other people.
-



General

- Essential visitors will be allowed by appointment in the school buildings. All visitors must be health screened and wear a mask.
- Drinking fountains will be turned off. Students may bring their own water bottle, or the school will provide water bottles.
- Signage will be posted in classrooms, hallways, and entrances to communicate how to stop the spread, COVID-19 symptoms, preventative measures, good hygiene, and school/district specific protocols.

Transportation

Students will be required to wear masks on buses until the current CDC's Order is rescinded and/or modified.

- Please note: The CDC's Order under Section 361 of the Public Health Service Act (42 U.S.C. 264) and 42 Code of Federal Regulations 70.2, 71.31(b) and 71.32 (b) - "A Requirement For Persons To Wear Masks While On Conveyances And At Transportation Hubs" stipulates by law that our students and driver's of public school buses must wear masks at the current time.

For the safety of all on board and to remain in compliance CDC regulations, the following will be strictly enforced:

- Masks will be required for all occupants on the bus.
 - School sites will assist with sanitizing the bus or school vehicle between trips.
 - Riders will be required to keep hands to themselves and social distancing will be expected to the extent possible on all routes.
 - Family members should sit together whenever possible.
 - Food or drink will not be consumed on the bus, as it requires removal of masks.
 - Parents are encouraged to provide transportation to/from school to reduce capacity of the buses.
-

Facilities Use

- School facilities will be re-opened to visitors and activities outside of the school day for activities under Standard Operations.
 - Masks will be required for all individuals in the school building for any activity.
 - Sponsors of non-school sanctioned activities will submit a facility use agreement and a cleaning fee will be required to ensure the building is returned to a clean state prior to the return of staff and students.
-

Disinfecting/Cleaning

- Enhanced sanitation, including more frequent cleaning of high touch surfaces, high traffic areas, and shared equipment and work-spaces.
- Increased purchasing of PPE, hand sanitizer, and other approved cleaning supplies.
- Classrooms stocked with needed cleaning supplies.
- Age-appropriate cleaning tasks for students cleaning their own workspaces.
- Additional training for staff and students on cleaning procedures.



Student Activities and District Travel

Overview

- In-region student activities travel is permitted. Travel out of the region will be allowed at the SWRS School Board discretion.
- All district teams traveling will follow SWRS Activities Mitigation plans.
- All participating students in ASAA sanctioned activities must complete a COVID-19 Waiver and Release Form.

COVID-19 Testing

- Students and coaches taking part in extracurricular activities will be required to complete weekly COVID-19 testing throughout the season.
- Chaperones will be required to take a COVID-19 test on the same day as students and coaches

Travel

- The team must adhere to all local laws, mandates, and/or ordinances
- The team will wear masks in all indoor public spaces while not in play.
- When traveling to other schools, coaches will supervise students at all times and provide structured times for activities outside of the school.
- The team will not be allowed to visit local households while on school sponsored trips.

Hosting Events

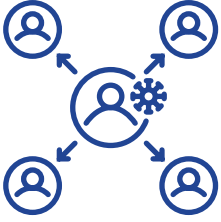
- Visiting teams must test athletes prior to the arrival of the event. This will be verified between the athletic directors of each district.
- When not competing, participants will wear a mask.
- Spectators may be allowed to attend if feasible.

Food Service

- Sites will serve breakfast in various ways following state food service guidelines.
- Hand washing before lunch is required.
- Shared utensils, condiments, or other items will not be allowed.
- Lunch will be served in classrooms or in the cafeteria at a greatly reduced capacity.
- Food services personnel will place all food items on student trays.
- If a student is not allowed into the school building due to self-quarantine or symptom isolation, breakfast and lunches must continue to be provided for that student.
- Social distancing will be strictly enforced due to masks not being worn while eating.

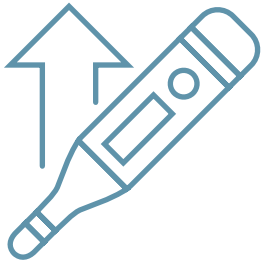


Symptom Free Facilities



Definitions:

- **Close Contact** - Someone who was less than 6 feet away from an infected person for a cumulative total of 15 minutes or more over a 24-hour period (for example, three individual 5-minute exposures for a total of 15 minutes).
- **Isolation** separates people exhibiting symptoms of a contagious disease from people who are not exhibiting symptoms.
- **Self-quarantine** separates and restricts the movements of people who were possibly exposed to a contagious disease to see if they become sick and avoid further spread of the disease.



Symptom Isolation:

An isolation period is required for all students, staff, and visitors to the school building if they are exhibiting symptoms of COVID-19 following these requirements.

- COVID-19 symptoms include fever over 100.3 degrees Fahrenheit or higher, cough, shortness or breath, chills, night sweats, sore throat, body aches, muscle aches, joint pain, loss of taste or smell, headache, confusion, vomiting, diarrhea, abdominal pain.
- Any student, staff, and visitor exhibiting symptoms of COVID-19 will not be allowed to enter the school building until they:
 - › receive a negative COVID-19 test and symptoms have improved, with no fever for 24 hours; OR
 - › remain home for 10 days if a COVID-19 test is refused or unavailable; OR
 - › obtain documentation from a healthcare provider stating that symptoms are due to a chronic condition

Vaccination

Vaccines are an important tool to help stop the COVID-19 pandemic. COVID-19 vaccinations are encourage for students and staff that meet the eligibility criteria. Parents and staff can contact the Bristol Bay Area Health Corporation (907 843 5287) or Public Health (907 842 5981) to learn more about COVID-19 vaccines, to get answers to your questions about the vaccine, and to make an appointment for a COVID-19 vaccine.



Screening Protocol

Every student, staff, and visitor will complete a health screening process before being allowed into the school building at all risk levels.

To complete daily health screening:

- Individuals will be asked if they have any symptoms of COVID-19.
 - COVID-19 symptoms include fever over 100.3 degrees Fahrenheit or higher, cough, shortness or breath, chills, night sweats, sore throat, body aches, muscle aches, joint pain, loss of taste or smell, headache, confusion, vomiting, diarrhea, abdominal pain.
- Individuals will have their temperature taken.
- Individual school sites will develop a specific protocol for how screenings and tracking of results will be kept.

If any individual is suspected of displaying symptoms of COVID-19, the Response Protocol will be followed.

Students will be monitored throughout the school day for symptoms.

Symptomatic Response Protocol

Visitor

- If a visitor to the building is suspected of displaying symptoms of COVID-19 during the health screening, they will be politely asked to leave the school building and encouraged to take a COVID-19 test.
 - That person will not be allowed to return to the school building for 10 days unless they receive a negative COVID-19 test result.
-

Positive Case Response Matrix

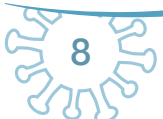
A case or cases in or directly linked to the school

Classroom, building, or district may close for one day (Additional days may be added to support complex contact tracing events).

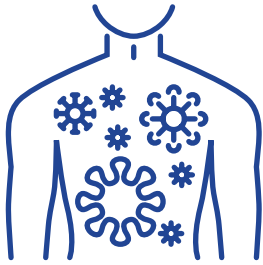
- As Soon As Possible: School facilities will be sanitized, disinfected and cleaned.
- Upon notification and on day one, contact tracing will occur until completed.
- See Response Protocol Chart

Widespread community transmission

- Widespread community transmission may result in a decision to transition to remote learning.
- Students' ages, classroom/school dynamics and other variables will play a role in decision making.
- Testing of all students and staff may be required for a return to in-person learning.



Response Protocol



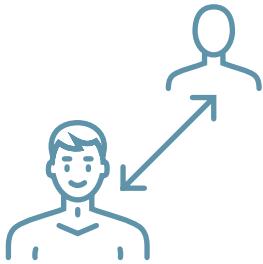
Positive COVID-19 Test:

Staff and/or students that have tested positive for COVID-19 must complete one of the following measures to return to school:

- Isolate for 5 days and be eligible to return to school on day 6 (or later) when you are fever free (without the aid of fever reducing medicine) and symptoms are improving. A mask is required to be worn for days six through ten after the isolation period; OR
- Isolate for 10 days and be eligible to return on day 11 after exposure
- Positive COVID-19 tests will be communicated to the site principal and superintendent, maintaining student privacy at all times.

**Symptomatic Staff & Students - day zero is the day that symptoms began*

**Asymptomatic Staff & Students - day zero is the day of the positive test result*

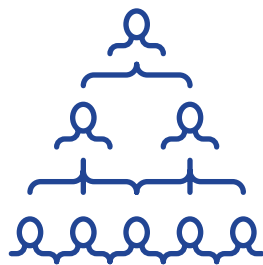


Close Contacts:

Close contacts must complete one of the following measures to return to school:

- Quarantine for 5 days after exposure and be eligible to return to school on day 6 (or later) with a negative test on day 5 (or later) after exposure. A mask is required to be worn for days six through ten after the negative test; OR
- Quarantine for 10 days and be eligible to return on day 11 after exposure; OR

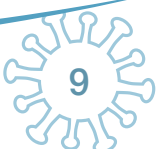
**Exception to quarantine - staff & student who had confirmed COVID-19 within the last 90 days.*

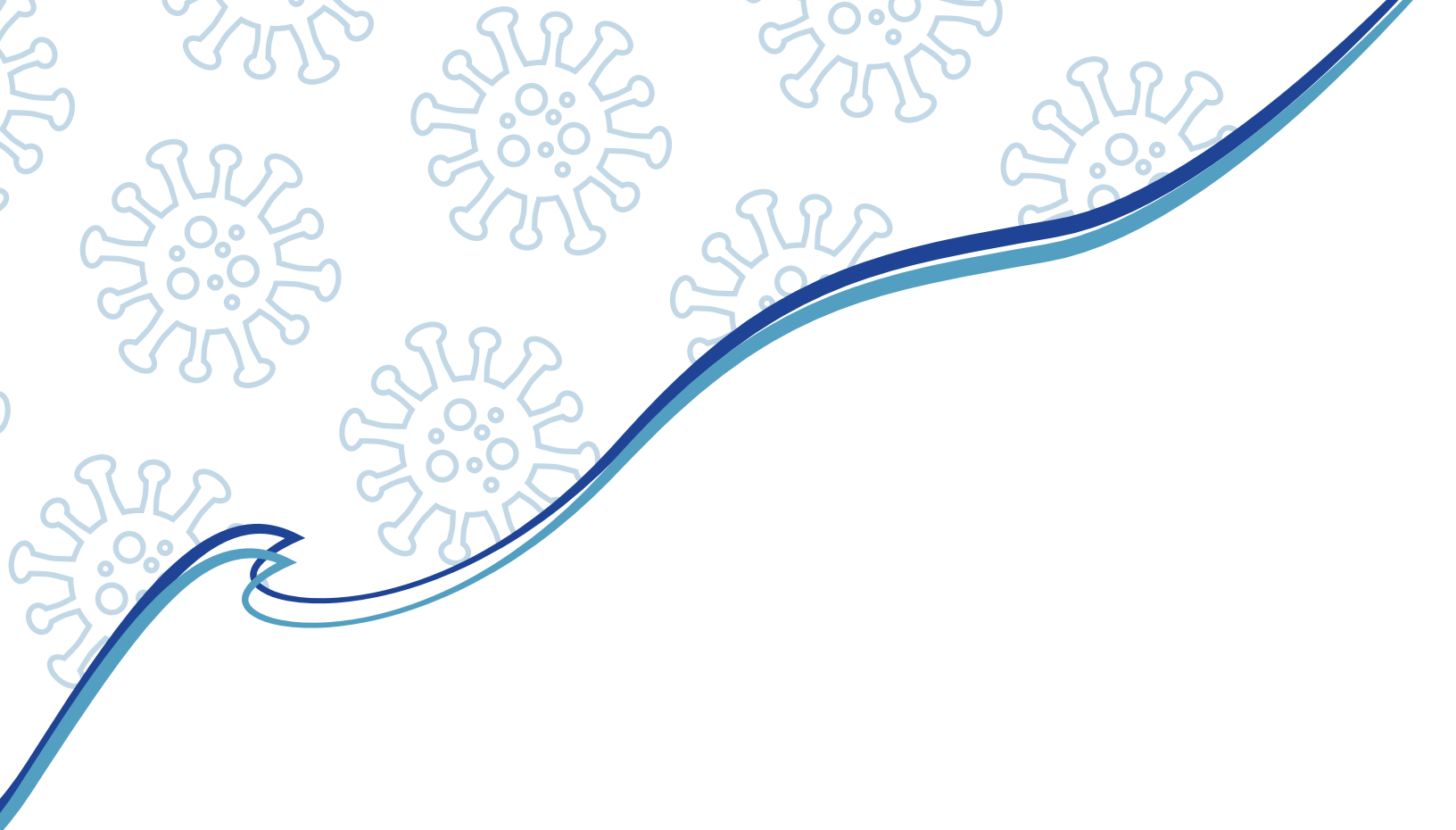


Ongoing Exposure (Household Cases & Close Contacts):

Staff and/or students that reside in a household with a COVID positive household member must complete one of the following measures to return to school:

- Household close contact will quarantine for 5 days following the 5 day isolation period of the positive household member (10 days total) and return to school on day 11 (or later) with a negative test on day 10 (or later). A mask is required to be worn for the five days after quarantine ends (days 11 through 15).
- Quarantine for 15 days and be eligible to return on day 16 after exposure; OR





Published February 2, 2022

Southwest Region Schools

www.swrsd.org

907-842-5287